

Eustoma russellianum F1

Lisianthus from Evanthia

- Elegant flowers with sturdy stems and sufficient length
- High quality series in a broad spectrum of colours
- Active breeding and continuous development of the product range



Please contact us for more information: evanthia.nl | sales@evanthia.nl

evanthia



Elegant flowers, sturdy stems with sufficient length, masses of flowers and buds in the top and a great durability. With Lisianthus of Evanthia you can count on excellent genetics and promising, continuous development of our product range. With many years of experience we are here to guide you on your variety selection and cultivation journey. Our Lisianthus range of Evanthia genetics covers Lisianthus groups 2 and 3. With assimilation lighting, our Lisianthus series can be grown all year round. Check our website for complementary series to create a year-round programme for any climate or cultivation method.

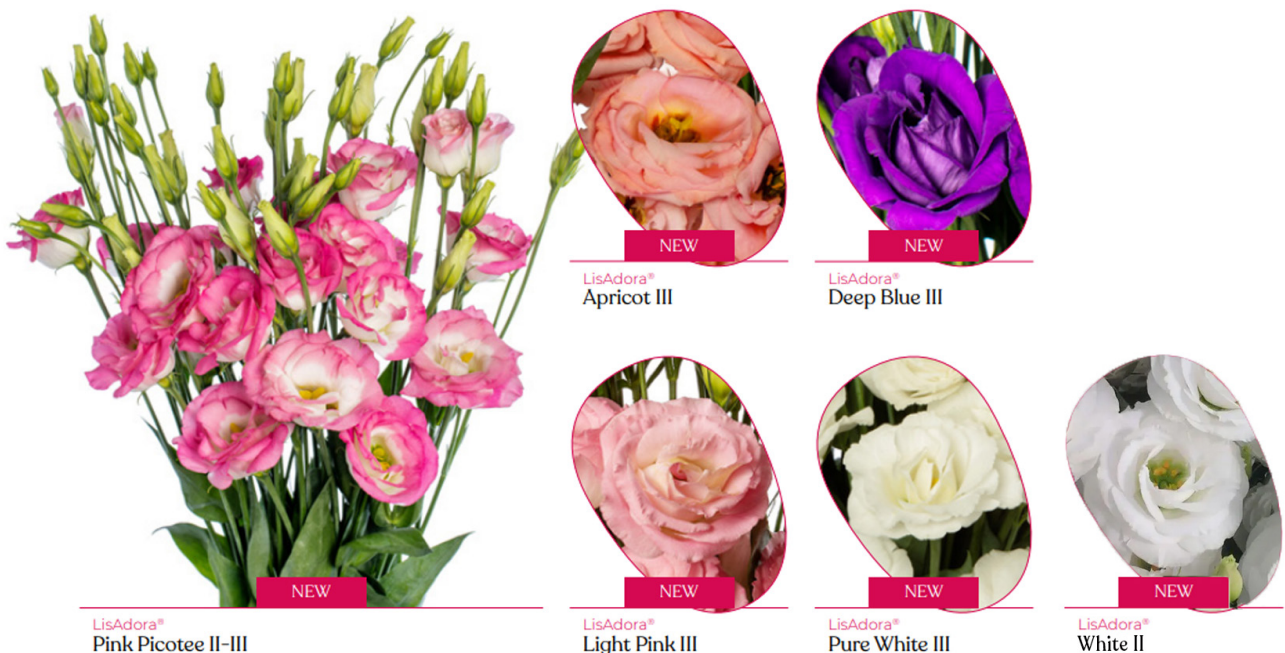
- Group II: Planting from late winter to mid spring.
Harvest from mid spring to early summer.
- Groep II-III: Planting from late winter to early summer.
Harvest from mid spring to autumn.
- Group III: Planting from mid spring to early summer.
Harvest during the summer months into autumn.

Flower profile:

| | | | |
|-----------------------------|-------------------------|---------------------------|-------------------------------------|
| Genus & species: | Eustoma russellianum F1 | Usage: | Ornamental; commercial cut flowers, |
| Family: | Gentianaceae | Stem length: | 80 to 90 cm |
| Common name: | Lisianthus | Starting material: | Raw and pelleted seed |

LisAdora collection

ALL NEW! This lovely Lisianthus LisAdora® is a true gift from the heart. This NEW top collection by Evanthia offers beautiful varieties that all ooze tenderness and luxury, yet all are very robust and resilient. The rich, well-filled double flowers have solid flower petals with an extraordinary hardiness, making the LisAdora® varieties less susceptible to Botrytis and hold up well in transport and in the vase. In addition, LisAdora® is a collection of special and uniquely coloured varieties that really add something to the established Lisianthus range. The LisAdora® varieties are in Lisianthus group III.





Cessna
Blue III



Cessna
Blue Picotee III



Cessna
Deep Rose III



Cessna
Green III



Cessna
Pure White III



Cessna
Red III



Cessna
Rose III



Cessna
Rose Picotee III



Cessna
Vogue IV



Cessna
White Imp. III



Cessna
Yellow III

Cessna series

Lisianthus Cessna is a highly productive top series with medium to large double flowers in a wide colour spectrum. A major advantage of Cessna is that the varieties in this series grow easily, even in less favourable conditions. The series develops a solid root system, which ensures good resistance. The varieties are uniform among themselves in terms of plant structure and cultivation time. All this

Evanthi series

With the Lisianthus Evanthi series, Evanthia has succeeded in developing a series that is considerably less sensitive to Botrytis. With firm petals, optimal branching in the top of the stem and ideal positioning of flowers and buds, the robust Evanthi series has proven itself. Evanthi Purple is a group II-III Lisianthus. Bright coloured varieties with double flowers, sturdy stems and an excellent vase life.



Evanthi
Purple II-III



Evanthi
White Wink III



Evanthi
Yellow II

Minilisi series

Great value comes in small packages... Lisianthus Minilisi® is a surprising series with a colourful spectrum of very rich, small-flowered varieties. Each branch offers a well-filled cluster of flowers and buds. The smaller flower size is well compensated by the abundance of flowers and buds. There is certainly no lack of colour! Besides the great flowering power, the flowers themselves are very strong and the varieties are highly uniform. Minilisi® is a group II Lisianthus series. Discover all single and double flowered varieties of the Minilisi® series.



Minilisi®
Blue Double II



Minilisi®
Blue Single II



Minilisi®
Pink Single II



Minilisi®
Rose Double II



Minilisi®
Rose Single II



Minilisi®
White Single II

Specialties



Adom
Deep Red III

Single-flowered with a unique intense pink/red shade and gracious, wavy petals. Group III variety.



Adom
Red Picotee III

Single-flowered with a beautiful colour gradient of white and pink/red flower edges. Group III variety.



Lisianthus
Peach Revelation F1 III

Single-flowered with a beautiful colour gradient of white and pink/red flower edges. Group III variety.

Eustoma russellianum F1 — Cultivation manual

Cut flower culture

Culture location: greenhouse
Sowing method TP
Sowing season yearround (greenhouse)

Germ temp. * 20-22°C (68-72°F)
Growing temp. 20-24°C (68-75°F)

Plug crop time 11 - 13 weeks

Crop duration

10-12 weeks from planting (summer).
14-18 weeks from planting (winter).

Seed requirement

1250 seeds for 1000 plants

Pests/diseases

Aphids, leaf miners, thrips, whitefly, caterpillars. Botrytis, Phytophthora, Fusarium, false mildew, Rhizoctonia, Sclerotinia. Preventative treatment is advised.

Fertilization (f)

Normal to high requirement. Fertilize regularly with calcium nitrate-based fertilizer at 100-200 ppm N, 1.5 EC. Discontinue fertilizer applications when buds become visible.

Cultivation tips

- * For optimum emergence and quality the seed trays are placed in a cool cell at 5-8°C (41-46°F) for 3 weeks.
- Soil should be decontaminated (steam) before planting.
- Note: seedlings are very slow to grow; prevent algae growth over the trays.

Sowing details

Pre-sow and transplant (TP):

Initial sowing media: pH 6,5-7,2 and EC 0,8-1,0 mmhos/cm
Sow : 1 seed/plug (406 cell tray)
Cover: no or light cover with fine vermiculite

Days 1 - 21*

Place the trays in a cool cell at 5-8°C for approx. 3 weeks
(m) moist
(t) 5-8°C (41-46°F)
(f) < 100 ppm N, < 0.7 EC

Avoid high temperatures after emergence (> 28°C (82°F)) in group I and II in order to avoid rosetting and causing stunted young plants

Days 22 - 35

(m) moist
(t) 20-22°C (68-72°F)
(l) 11.000-27.000 lux (1000-2500 fc)
(f) 100-175 ppm N, 0.7-1.2 EC

Days 36 - 70

(m) normal
(t) 17-20°C (63-68°F)
(l) 27.000-54.000 lux (2500-5000 fc)
(f) 75-225 ppm N, 1.2 -1.5 EC

Days 71 - 77

Seedlings should have 4 true leaves. Timely transplant will ensure an active root system. Transplant of older plugs may cause shorter stems and premature flowering.

Notes

- Irrigate the soil prior to planting, and see to it that the plugs are well-moistened.
- Crop time depends on series, season, temperature, (HID) lighting and greenhouse conditions.

Growing on

Soil/media

well-drained, light, fertile soil
pH 6,5-7,2, 0,8-1,0 EC

Netting

One or two layers netting are advised.

Pinching

Optional. Pinch after second leaf pair when plants start to elongate.

Plants density

Non-pinched: 65-86 plants/ m²
(6-8 plants/ft²).
Pinched: 32-40 plants/m²
(3-4 pl/ft²)

Moisture (m)

Dry only slightly between water supply. Switch to drip irrigation when foliage grows. Soil should not dry out when plants start flowering.

Temperature (t)

Day: 20-24°C (68-75°F). Night: 16-18°C (60-65°F). Provide good air circulation. Avoid low light levels and excessive humidity (optimum RH is 80%).

Light (l)

Facultative long day. > 14 hours will accelerate flowering. Full sun produces shorter stems. Shade when necessary (especially in the first two weeks after planting).

Harvest

- Harvest when 2 or 3 flowers are open. Harvest in the morning when still cool. Lisianthus is not ethylene sensitive. For post harvest treatments, see: www.vbn.nl/en/list-pre-treatments/

This information is for general guidance only, and is in some cases specific for North European conditions. No guarantee is given for the result of the crop, nor is liability accepted for the consequences of applying the indications given.